

File No. 1599  
Board Order # 1599-1

---

February 19, 2008

**MEDIATION AND ARBITRATION BOARD**

IN THE MATTER OF THE PETROLEUM AND NATURAL GAS  
ACT, R.S.B.C., C. 361 AS AMENDED

AND IN THE MATTER OF SE ¼ Section 12 TWP 77 Range 15 W6M

(The "Lands")

BETWEEN:

Encana Corporation

(APPLICANT)

AND:

Irene and George Merrick

(RESPONDENTS)

---

**BOARD ORDER**

---

The applicant requires access to the Lands for the purpose of constructing and operating a flow line as shown on the attached plan (Appendix A). Right of entry is not opposed but the parties have not agreed on the compensation payable for the entry, occupation and use of the Lands, and for nuisance and disturbance. The parties agree that a right of entry order should be made, and agree that the compensation issues be scheduled for a further mediation hearing.

BY CONSENT, the Mediation and Arbitration Board orders:

1. Upon payment of the amounts set out in paragraphs 2 and 3, the Applicant shall have the right of entry to and access across the portion of the Lands shown in Schedule A for the purpose of constructing and operating a flow line.
2. The Applicant shall deposit with the Mediation and Arbitration Board security in the amount of \$4,000.00. All or part of the security deposit may be returned to the Applicant or paid to the Respondent upon the agreement of the parties or as ordered by the Board.
3. The Applicant shall pay to the Respondent the amount of \$4,351.00 as partial payment for compensation payable for entry to and use of the Lands.
4. The Applicant shall serve the Respondents with a copy of this Order by e-mail prior to entry onto the Lands.
5. This Order is subject to the application process required by the Oil and Gas Commission and nothing in this order operates as consent, permission, approval or authorization of matters within the jurisdiction of the Oil and Gas Commission.

Dated: February 19, 2008

FOR THE BOARD



Cheryl Vickers  
Chair

**SCHEDULE "A"**

Page \_\_\_ of \_\_\_

Attached to and made part of this Agreement dated this \_\_\_\_\_ day of \_\_\_\_\_, 20\_\_\_\_, between  
George Robert Merrick and Irene Stuart Merrick (Lessor) and EnCana Corporation (Lessee).

**INDIVIDUAL OWNERSHIP PLAN**  
SHOWING PROPOSED 23m PIPELINE RIGHT OF WAY WITHIN THE SOUTH EAST 1/4  
OF SECTION 12, TOWNSHIP 77, RANGE 15, W6M  
PEACE RIVER DISTRICT

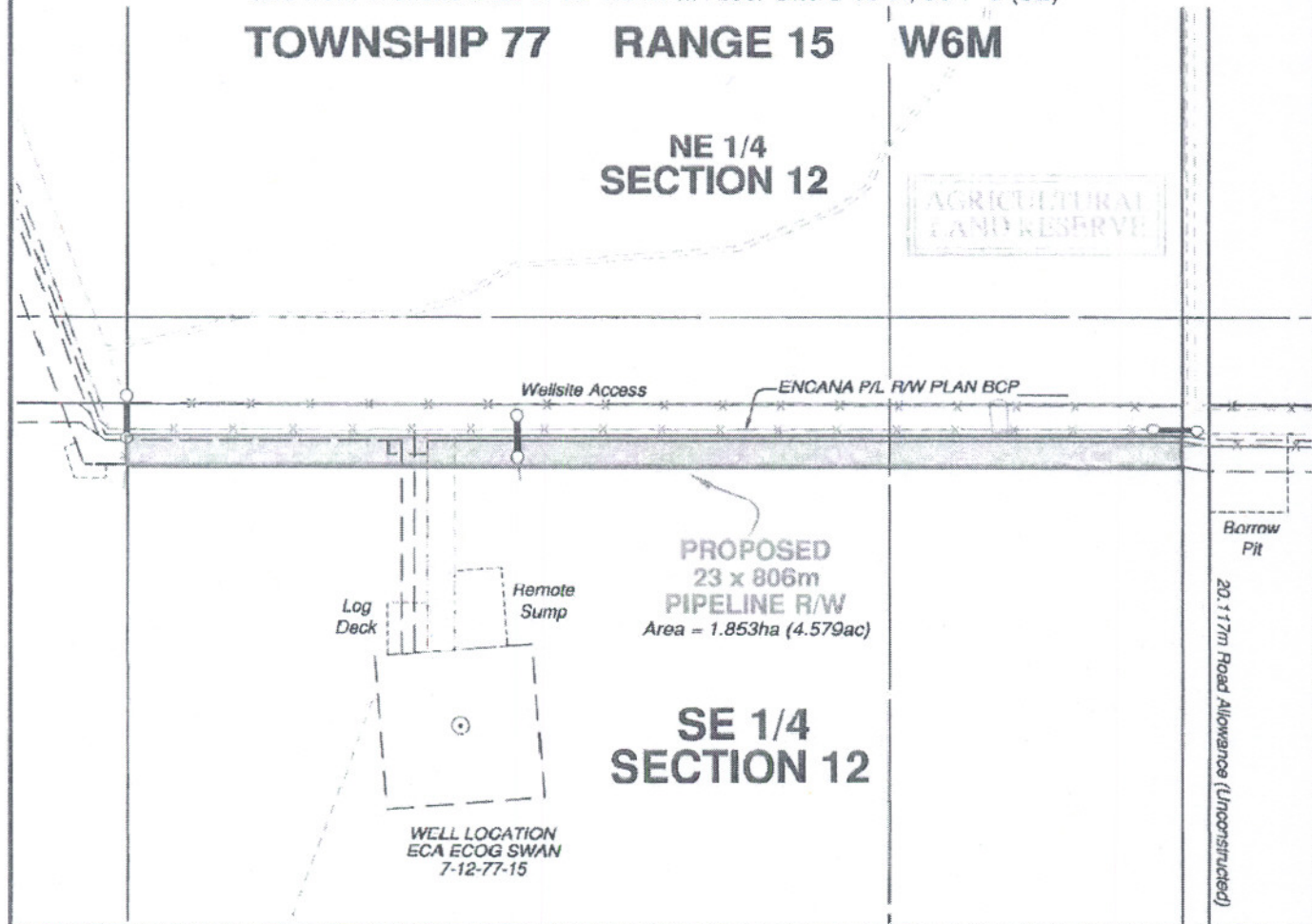
(Associated with Pipeline R/W from Compressor Site 9-15-77-15 To Wellsite a-29-H, 93-P-9 (S1)  
and from Wellsite a-29-H To Tie-In at Riser Site d-19-H, 93-P-9 (S2))

**TOWNSHIP 77      RANGE 15      W6M**

**NE 1/4  
SECTION 12**

AGRICULTURAL  
LAND RESERVE

**SE 1/4  
SECTION 12**



Owner(s): George Robert Merrick  
Irene Stuart Merrick  
Landowner File: S445073

Area(s):	Permanent	1.853 ha	4.579 ac
	Temporary	0.000 ha	0.000 ac
	Total	1.853 ha	4.579 ac

Certification Title No.: BA580078  
Parcel Identification No.: 017-729-980  
EnCana File: S441778

Certified correct this 13th day  
of November, 2007.

Adam Brash, BCLS

Area referred to shown thus:



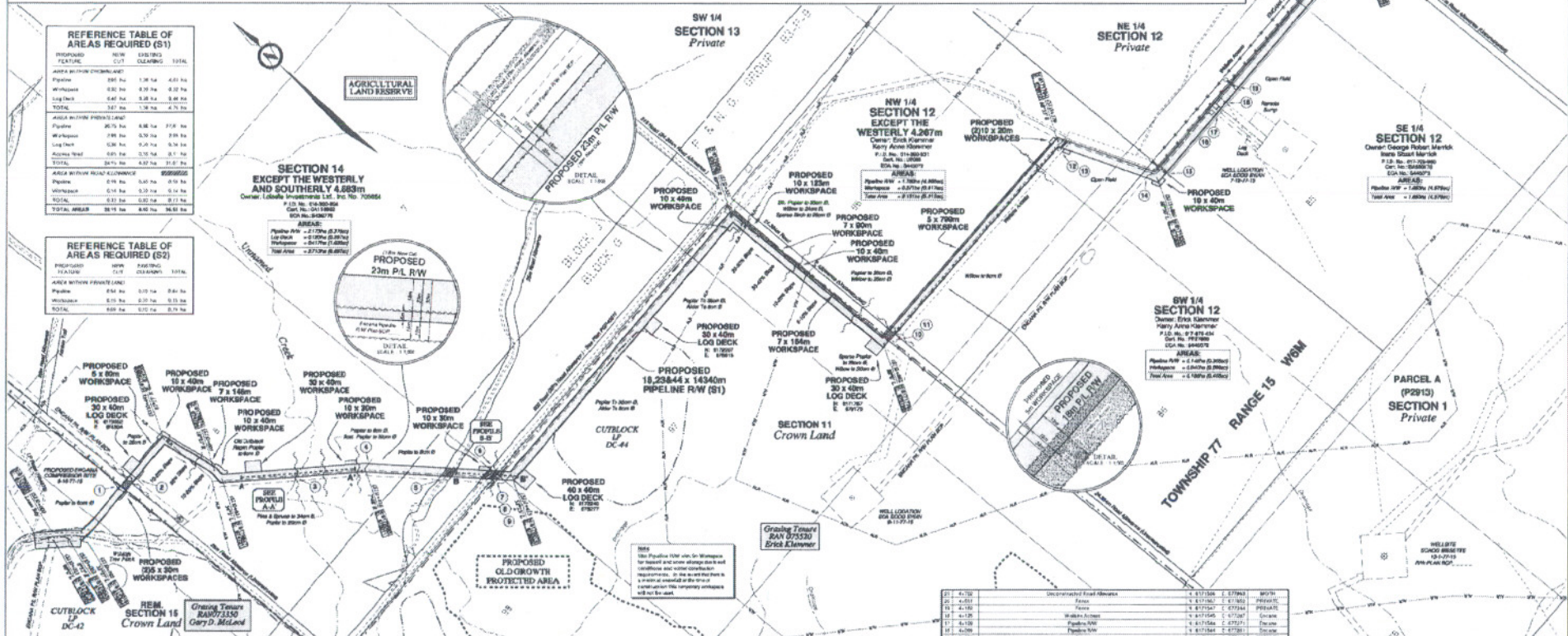
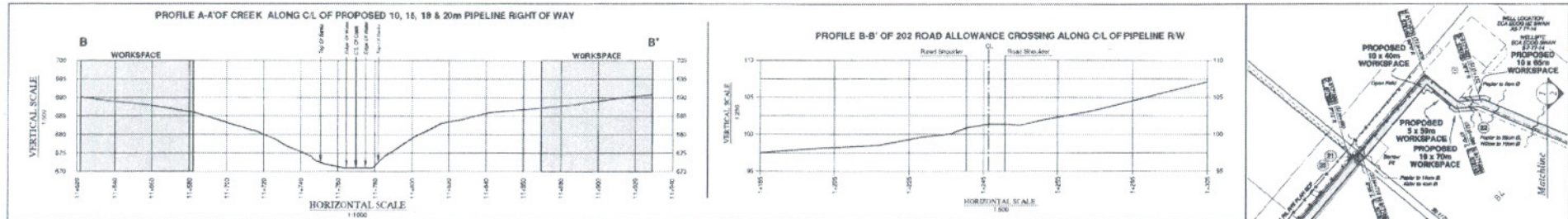
Scale 1: 5000



Focus Job No.: 070728NP04R0 By: KG  
Revision: 0

**FOCUS**  
Focus Surveys  
FCS Land Services Limited Partnership

Fort St. John  
10720-100th Ave.  
BC, V1J 1Z3  
Ph. (250)787-0300  
Fax (250)787-1611  
www.focus.ca



**REFERENCE TABLE OF AREAS REQUIRED (S1)**

PROPOSED FEATURES	CUT	CLEARING	TOTAL
PIPELINE	895.00 ha	1.38 ha	896.38 ha
WORKSPACE	8.00 ha	8.35 ha	16.35 ha
LOG DECK	2.40 ha	5.28 ha	7.68 ha
TOTAL	905.40 ha	15.01 ha	920.41 ha

AREA WITHIN PERMITTED LAND

PIPELINE	895.00 ha	8.88 ha	903.88 ha
WORKSPACE	7.96 ha	8.35 ha	16.31 ha
LOG DECK	2.40 ha	5.28 ha	7.68 ha
ADDITIONAL ROAD	0.00 ha	3.75 ha	3.75 ha
TOTAL	905.36 ha	16.26 ha	921.62 ha

AREA WITHIN ROAD ALLOWANCE

PIPELINE	0.18 ha	5.50 ha	5.68 ha
WORKSPACE	0.10 ha	5.23 ha	5.33 ha
TOTAL	0.28 ha	10.73 ha	11.01 ha

TOTAL AREAS: 905.64 ha CUT, 8.80 ha CLEARING, 914.44 ha TOTAL

**REFERENCE TABLE OF AREAS REQUIRED (S2)**

PROPOSED FEATURES	CUT	CLEARING	TOTAL
PIPELINE	895.00 ha	1.38 ha	896.38 ha
WORKSPACE	8.00 ha	8.35 ha	16.35 ha
LOG DECK	2.40 ha	5.28 ha	7.68 ha
TOTAL	905.40 ha	15.01 ha	920.41 ha

AREA WITHIN PERMITTED LAND

PIPELINE	895.00 ha	8.88 ha	903.88 ha
WORKSPACE	7.96 ha	8.35 ha	16.31 ha
LOG DECK	2.40 ha	5.28 ha	7.68 ha
ADDITIONAL ROAD	0.00 ha	3.75 ha	3.75 ha
TOTAL	905.36 ha	16.26 ha	921.62 ha

AREA WITHIN ROAD ALLOWANCE

PIPELINE	0.18 ha	5.50 ha	5.68 ha
WORKSPACE	0.10 ha	5.23 ha	5.33 ha
TOTAL	0.28 ha	10.73 ha	11.01 ha

TOTAL AREAS: 905.64 ha CUT, 8.80 ha CLEARING, 914.44 ha TOTAL

**REVISIONS**

No.	Description	DATE	BY
1	Original Plan Prepared	2011/07/18	AW
2	Construction Details Incorporated	2011/12/12	AW
3	Updated Crossings Table and Notes	2012/12/12	AW

**NOTES:**

- All construction activities shall be conducted with attention to the protection of the environment. All activities shall be conducted in accordance with the applicable regulatory requirements.
- The proposed pipeline shall be installed in accordance with the applicable regulatory requirements.
- The proposed pipeline shall be installed in accordance with the applicable regulatory requirements.
- The proposed pipeline shall be installed in accordance with the applicable regulatory requirements.
- The proposed pipeline shall be installed in accordance with the applicable regulatory requirements.
- The proposed pipeline shall be installed in accordance with the applicable regulatory requirements.
- The proposed pipeline shall be installed in accordance with the applicable regulatory requirements.
- The proposed pipeline shall be installed in accordance with the applicable regulatory requirements.
- The proposed pipeline shall be installed in accordance with the applicable regulatory requirements.
- The proposed pipeline shall be installed in accordance with the applicable regulatory requirements.

**PIPE SPECIFICATIONS**

ITEM	DESCRIPTION	UNIT	QUANTITY
1	PIPELINE	m	18,234
2	WORKSPACE	m <sup>2</sup>	16,350
3	LOG DECK	m <sup>2</sup>	7,680
4	ADDITIONAL ROAD	m <sup>2</sup>	3,750
5	TOTAL	m <sup>2</sup>	92,041

**CROSSINGS**

NO.	CROSSING	DATE	BY
1	Highway 16	2011/07/18	AW
2	Highway 16	2011/07/18	AW
3	Highway 16	2011/07/18	AW
4	Highway 16	2011/07/18	AW
5	Highway 16	2011/07/18	AW
6	Highway 16	2011/07/18	AW
7	Highway 16	2011/07/18	AW
8	Highway 16	2011/07/18	AW
9	Highway 16	2011/07/18	AW
10	Highway 16	2011/07/18	AW
11	Highway 16	2011/07/18	AW
12	Highway 16	2011/07/18	AW
13	Highway 16	2011/07/18	AW
14	Highway 16	2011/07/18	AW
15	Highway 16	2011/07/18	AW
16	Highway 16	2011/07/18	AW
17	Highway 16	2011/07/18	AW
18	Highway 16	2011/07/18	AW
19	Highway 16	2011/07/18	AW
20	Highway 16	2011/07/18	AW
21	Highway 16	2011/07/18	AW
22	Highway 16	2011/07/18	AW
23	Highway 16	2011/07/18	AW
24	Highway 16	2011/07/18	AW
25	Highway 16	2011/07/18	AW
26	Highway 16	2011/07/18	AW
27	Highway 16	2011/07/18	AW
28	Highway 16	2011/07/18	AW
29	Highway 16	2011/07/18	AW
30	Highway 16	2011/07/18	AW
31	Highway 16	2011/07/18	AW
32	Highway 16	2011/07/18	AW
33	Highway 16	2011/07/18	AW
34	Highway 16	2011/07/18	AW
35	Highway 16	2011/07/18	AW
36	Highway 16	2011/07/18	AW
37	Highway 16	2011/07/18	AW
38	Highway 16	2011/07/18	AW
39	Highway 16	2011/07/18	AW
40	Highway 16	2011/07/18	AW
41	Highway 16	2011/07/18	AW
42	Highway 16	2011/07/18	AW
43	Highway 16	2011/07/18	AW
44	Highway 16	2011/07/18	AW
45	Highway 16	2011/07/18	AW
46	Highway 16	2011/07/18	AW
47	Highway 16	2011/07/18	AW
48	Highway 16	2011/07/18	AW
49	Highway 16	2011/07/18	AW
50	Highway 16	2011/07/18	AW
51	Highway 16	2011/07/18	AW
52	Highway 16	2011/07/18	AW
53	Highway 16	2011/07/18	AW
54	Highway 16	2011/07/18	AW
55	Highway 16	2011/07/18	AW
56	Highway 16	2011/07/18	AW
57	Highway 16	2011/07/18	AW
58	Highway 16	2011/07/18	AW
59	Highway 16	2011/07/18	AW
60	Highway 16	2011/07/18	AW
61	Highway 16	2011/07/18	AW
62	Highway 16	2011/07/18	AW
63	Highway 16	2011/07/18	AW
64	Highway 16	2011/07/18	AW
65	Highway 16	2011/07/18	AW
66	Highway 16	2011/07/18	AW
67	Highway 16	2011/07/18	AW
68	Highway 16	2011/07/18	AW
69	Highway 16	2011/07/18	AW
70	Highway 16	2011/07/18	AW
71	Highway 16	2011/07/18	AW
72	Highway 16	2011/07/18	AW
73	Highway 16	2011/07/18	AW
74	Highway 16	2011/07/18	AW
75	Highway 16	2011/07/18	AW
76	Highway 16	2011/07/18	AW
77	Highway 16	2011/07/18	AW
78	Highway 16	2011/07/18	AW
79	Highway 16	2011/07/18	AW
80	Highway 16	2011/07/18	AW
81	Highway 16	2011/07/18	AW
82	Highway 16	2011/07/18	AW
83	Highway 16	2011/07/18	AW
84	Highway 16	2011/07/18	AW
85	Highway 16	2011/07/18	AW
86	Highway 16	2011/07/18	AW
87	Highway 16	2011/07/18	AW
88	Highway 16	2011/07/18	AW
89	Highway 16	2011/07/18	AW
90	Highway 16	2011/07/18	AW
91	Highway 16	2011/07/18	AW
92	Highway 16	2011/07/18	AW
93	Highway 16	2011/07/18	AW
94	Highway 16	2011/07/18	AW
95	Highway 16	2011/07/18	AW
96	Highway 16	2011/07/18	AW
97	Highway 16	2011/07/18	AW
98	Highway 16	2011/07/18	AW
99	Highway 16	2011/07/18	AW
100	Highway 16	2011/07/18	AW

**ENCANACORPORATION**

SCALE: 1:5000

PROPOSED 18,234m PIPELINE RIGHT OF WAY FROM COMPRESSOR SITE 9-15-77-15 TO WELLSITE 8-29-H, 83-P-9 (S1) AND FROM WELLSITE 8-29-H TO TIE-IN AT RISER SITE 8-19-H, 83-P-9 (S2)

SCALE: 1:5000

FOCUS SURVEYS

DATE: 2012/12/12

PROJECT: ENCANACORPORATION

SCALE: 1:5000

FOCUS SURVEYS

DATE: 2012/12/12

PROJECT: ENCANACORPORATION